



OLD HALL

COUNTRY ESTATE

Floor Plans Brochure



CARDEN HOMES

DESIGNED LUXURY LIVING



KEY

- Site boundary
- EXISTING
 - FLAVOR TREE SURVEY BY T&E
 - Existing canopy tree to be retained
 - Existing canopy tree to be removed
 - Tree/vegetation to be removed or cut back
 - Native Root Protection Area
- PROPOSED
 - Tree
 - NOTE: Root barriers are to be employed near services to Engineer specifications.
 - Specimen shrubs
 - Plant areas: Turf
 - Area garden: Turf
 - Ornamental shrubs
 - Permeable PAV, General Purpose Resurfacing (M1, 225000-0)
 - Ballroom
 - Single species hedge - Box hedges
 - Native single species hedge - Sea-spruce
 - Native mixed species hedge

LANDSCAPE SPECIFICATION NOTES

Notes:
 1. All plants to be installed as specified in the schedule.
 2. All plants to be installed in accordance with the schedule.
 3. All plants to be installed in accordance with the schedule.
 4. All plants to be installed in accordance with the schedule.
 5. All plants to be installed in accordance with the schedule.
 6. All plants to be installed in accordance with the schedule.
 7. All plants to be installed in accordance with the schedule.
 8. All plants to be installed in accordance with the schedule.
 9. All plants to be installed in accordance with the schedule.
 10. All plants to be installed in accordance with the schedule.

MAINTENANCE

Notes:
 1. All plants to be installed in accordance with the schedule.
 2. All plants to be installed in accordance with the schedule.
 3. All plants to be installed in accordance with the schedule.
 4. All plants to be installed in accordance with the schedule.
 5. All plants to be installed in accordance with the schedule.
 6. All plants to be installed in accordance with the schedule.
 7. All plants to be installed in accordance with the schedule.
 8. All plants to be installed in accordance with the schedule.
 9. All plants to be installed in accordance with the schedule.
 10. All plants to be installed in accordance with the schedule.

PLANT SCHEDULE

| Plant Name | Quantity | Plant Size | Plant Source |
|------------|----------|------------|--------------|
| Plant A | 10 | 100cm | Local |
| Plant B | 5 | 150cm | Local |
| Plant C | 20 | 50cm | Local |
| Plant D | 15 | 100cm | Local |
| Plant E | 10 | 150cm | Local |
| Plant F | 5 | 200cm | Local |
| Plant G | 10 | 100cm | Local |
| Plant H | 5 | 150cm | Local |
| Plant I | 10 | 100cm | Local |
| Plant J | 5 | 150cm | Local |
| Plant K | 10 | 100cm | Local |
| Plant L | 5 | 150cm | Local |
| Plant M | 10 | 100cm | Local |
| Plant N | 5 | 150cm | Local |
| Plant O | 10 | 100cm | Local |
| Plant P | 5 | 150cm | Local |
| Plant Q | 10 | 100cm | Local |
| Plant R | 5 | 150cm | Local |
| Plant S | 10 | 100cm | Local |
| Plant T | 5 | 150cm | Local |
| Plant U | 10 | 100cm | Local |
| Plant V | 5 | 150cm | Local |
| Plant W | 10 | 100cm | Local |
| Plant X | 5 | 150cm | Local |
| Plant Y | 10 | 100cm | Local |
| Plant Z | 5 | 150cm | Local |

INK Landscape
 OLD HALL COUNTRY CLUB, CHESTER
 Proposed Landscape Proposal
 Sheet 1 of 1
 Client: Moor Property Group
 Scale: 1:2000
 Drawing Number: 2022/08-003
 Drawing Name: 03
 Date: 15/05/22



| L A T E R A L |



Floor Plans

Lateral 1



| | |
|--------------------------------|-----------------------------|
| Kitchen / Living / Dining Area | 4.7m [15'4"] x 8.5m [27'8"] |
| Utility | 2.3m [7'5"] x 1.8m [5'9"] |
| WC | 1m [3'3"] x 1.8m [5'9"] |
| Bedroom 1 | 3.4m [11'2"] x 4m [13'9"] |
| En-suite 1 | 3.4m [11'2"] x 1.1m [3'6"] |

| | |
|------------|-----------------------------|
| Bedroom 2 | 3.4m [11'2"] x 3.3m [10'8"] |
| En-suite 2 | 3.4m [11'2"] x 1.3m [4'3"] |

Lateral 2



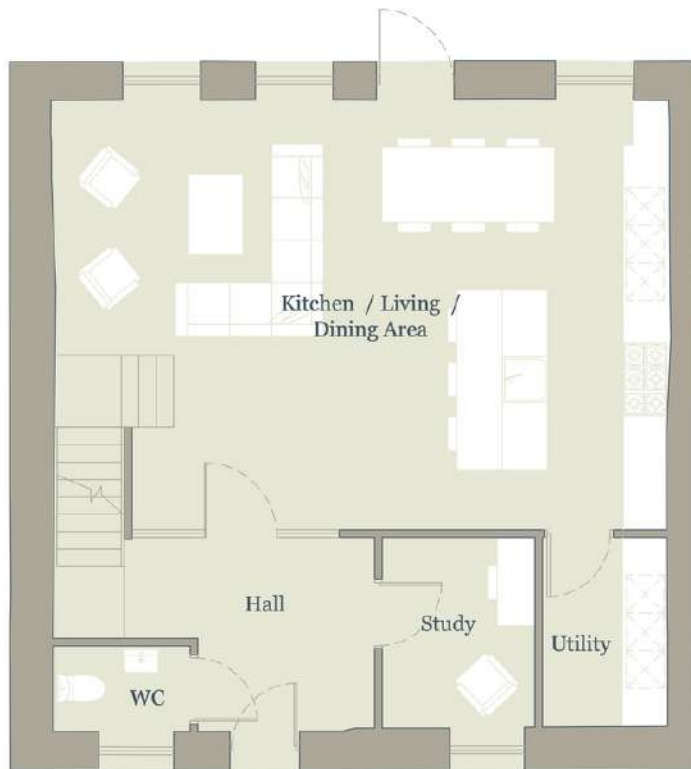
| | |
|--------------------------------|-----------------------------|
| Kitchen / Living / Dining Area | 4.8m [15'7"] x 8.4m [27'6"] |
| Utility | 2.3m [7'5"] x 1.7m [5'6"] |
| WC | 1m [3'3"] x 1.7m [5'6"] |
| Bedroom 1 | 3.3m [10'8"] x 4.6m [15'1"] |
| En-suite 1 | 3.3m [10'8"] x 1.1m [3'6"] |

| | |
|------------|----------------------------|
| Bedroom 2 | 3.3m [10'8"] x 2.7m [8'9"] |
| En-suite 2 | 3.4m [11'2"] x 1.4m [4'6"] |



HERITAGE

Floor Plans



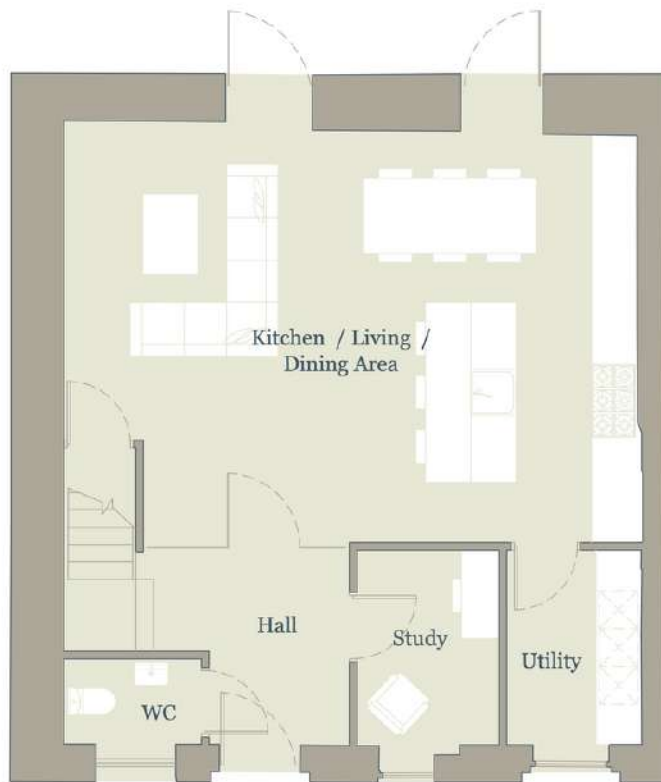
| | |
|--------------------------------|---------------------------|
| Kitchen / Living / Dining Area | 8.2m [26'9] x 5.7m [18'7] |
| Study | 2m [6'6] x 2.5m [8'2] |
| Utility | 1.7m [5'6] x 2.5m [8'2] |
| WC | 1.8m [5'9] x 1.1m [3'6] |
| Bedroom 1 | 3.8m [12'5] x 3.2m [10'5] |
| En-suite 1 | 1.2m [3'9] x 3.2m [10'5] |

| | |
|------------|--------------------------|
| Bedroom 2 | 3m [9'8] x 3.2m [10'5] |
| En-suite 2 | 2m [6'6] x 2m [6'6] |
| Bedroom 3 | 3.1m [10'2] x 3m [9'8] |
| Bedroom 4 | 2.6m [8'5] x 3.4m [11'2] |
| Bathroom | 2.4m [7'9] x 2.1m [6'9] |



| | |
|--------------------------------|---------------------------|
| Kitchen / Living / Dining Area | 7.6m [24'9] x 5.5m [18'0] |
| WC / Utility | 3.5m [11'5] x 2.6m [8'5] |
| Snug / Study | 1.7m [5'6] x 2.6m [8'5] |
| Bedroom 1 | 3.3m [10'8] x 3.1m [10'2] |
| En-suite 1 | 1.2m [3'9] x 3.1m [10'2] |

| | |
|------------|---------------------------|
| Bedroom 2 | 3.1m [10'2] x 3.2m [10'5] |
| En-suite 2 | 2m [6'6] x 2m [6'6] |
| Bedroom 3 | 3.1m [10'2] x 3m [9'8] |
| Bedroom 4 | 2.4m [7'9] x 3.4m [11'2] |
| Bathroom | 2.1m [6'9] x 1.8m [5'9] |



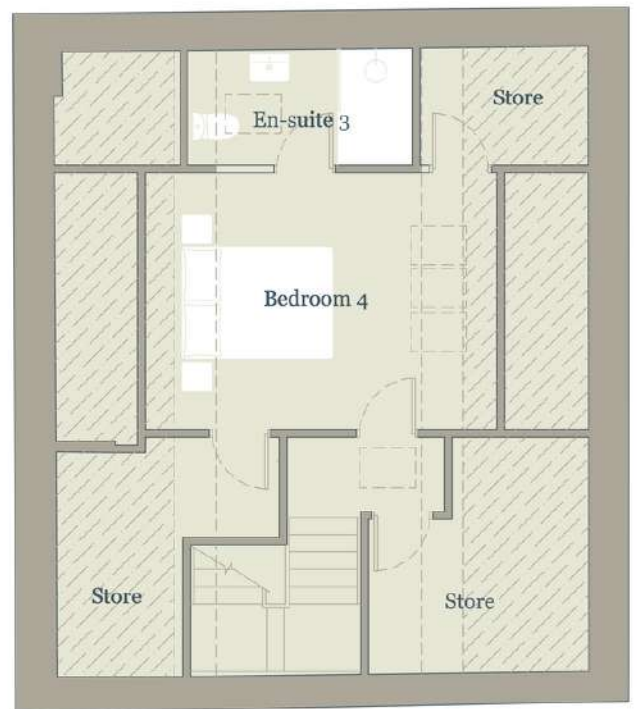
| | |
|--------------------------------|---------------------------|
| Kitchen / Living / Dining Area | 7.6m [24'9] x 5.4m [17'7] |
| Study | 1.9m [6'2] x 2.6m [8'5] |
| Utility | 1.8m [5'9] x 2.6m [8'5] |
| WC | 1.8m [5'9] x 1.1m [3'6] |
| Bedroom 1 | 3.2m [10'5] x 3.3m [10'8] |
| En-suite 1 | 1.2m [3'9] x 3.3m [10'8] |

| | |
|------------|---------------------------|
| Bedroom 2 | 3.1m [10'2] x 3.2m [10'5] |
| En-suite 2 | 2m [6'6] x 2m [6'6] |
| Bedroom 3 | 3.7m [12'1] x 2.9m [9'5] |
| Bedroom 4 | 1.7m [5'6] x 3.4m [11'2] |
| Bathroom | 2.1m [6'9] x 1.8m [5'9] |



| | |
|--------------------------------|---------------------------|
| Kitchen / Living / Dining Area | 9.8m [32'2] x 5.6m [18'4] |
| Snug / Study | 3.6m [11'8] x 2.6m [8'5] |
| Utility | 1.7m [5'6] x 2.6m [8'5] |
| WC | 1.8m [5'9] x 1.1m [3'6] |
| Bedroom 1 | 4.1m [13'5] x 3.3m [10'8] |
| En-suite 1 | 1.9m [6'2] x 3.3m [10'8] |

| | |
|------------|---------------------------|
| Bedroom 2 | 3.7m [12'1] x 3.2m [10'5] |
| En-suite 2 | 2m [6'6] x 2.7m [8'9] |
| Bedroom 3 | 3.7m [12'1] x 2.9m [9'5] |
| Bedroom 4 | 3.7m [12'1] x 3.4m [11'2] |
| Bathroom | 2.3m [7'5] x 3.4m [11'2] |



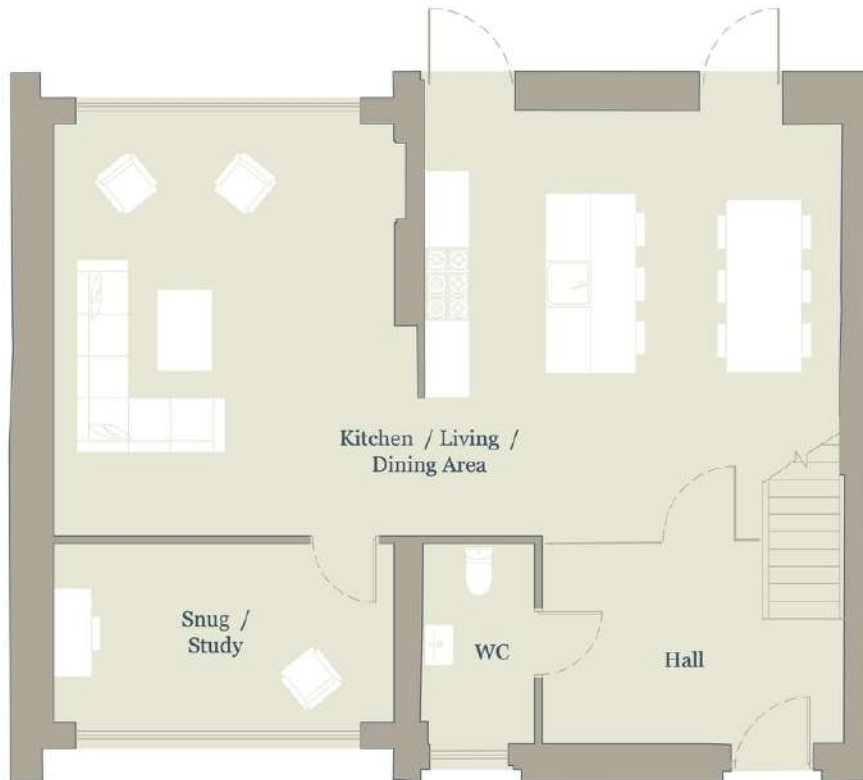
| | |
|--------------------------------|-----------------------------|
| Kitchen / Living / Dining Area | 4.4m [14'4"] x 8.2m [26'9"] |
| Study | 2.5m [8'2"] x 3.1m [10'2"] |
| WC | 1.7m [5'6"] x 2.4m [7'9"] |
| Bedroom 1 | 4.1m [13'5"] x 3.1m [10'2"] |
| En-suite 1 | 2.9m [9'5"] x 1.8m [5'9"] |

| | |
|------------|-----------------------------|
| Bedroom 2 | 2.8m [9'2"] x 3.4m [11'2"] |
| En-suite 2 | 2.8m [9'2"] x 1.7m [5'6"] |
| Bedroom 3 | 2.9m [9'5"] x 3.1m [10'2"] |
| Bathroom | 1.7m [5'6"] x 3m [9'8"] |
| Bedroom 4 | 4.6m [15'1"] x 3.4m [11'2"] |
| En-suite 3 | 3m [9'8"] x 1.5m [4'9"] |

ICONIC

Floor Plans

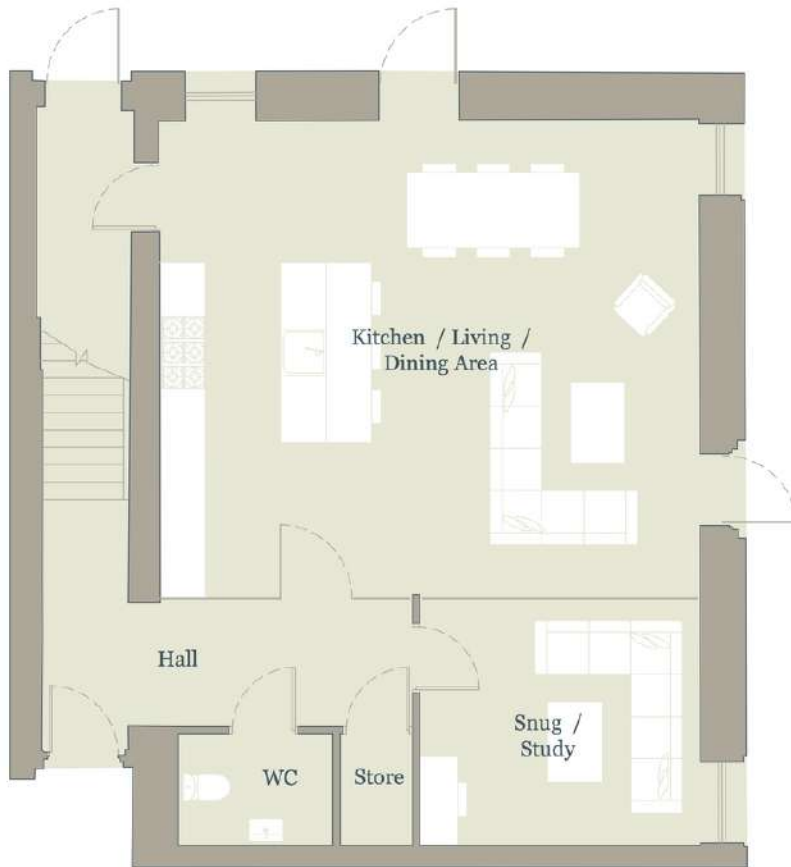
Iconic 4



| | |
|--------------------------------|---------------------------|
| Kitchen / Living / Dining Area | 10m [32'8] x 5.6m [18'4] |
| Snug / Study | 4.5m [14'8] x 2.4m [7'9] |
| WC | 1.5m [4'9] x 2.7m [8'9] |
| Bedroom 1 | 3.3m [10'8] x 3.5m [11'5] |
| En-suite 1 | 2.1m [6'9] x 2.7m [8'9] |

| | |
|------------|---------------------------|
| Bedroom 2 | 4.5m [14'8] x 3.1m [10'2] |
| En-suite 2 | 3.3m [10'8] x 1.7m [5'6] |
| Bedroom 3 | 4.5m [14'8] x 2.8m [9'2] |
| Bedroom 4 | 3.3m [10'8] x 2.9m [9'5] |
| Bathroom | 2.2m [7'2] x 2.6m [8'5] |

Iconic 8



| | |
|--------------------------------|-----------------------------|
| Kitchen / Living / Dining Area | 7.1m [23'3"] x 6.3m [20'7"] |
| Snug / Study | 3.7m [12'1"] x 3.3m [10'5"] |
| WC | 2m [6'6"] x 1.5m [4'9"] |
| Bedroom 1 | 4.2m [13'8"] x 3.6m [11'8"] |
| En-suite 1 | 4.2m [13'8"] x 1.2m [3'9"] |

| | |
|-----------------------|----------------------------|
| Bedroom 2 | 4.4m [14'4"] x 3m [9'8"] |
| En-suite 2 | 1.6m [5'2"] x 2.5m [8'2"] |
| Bedroom 3 | 4.5m [14'8"] x 2.9m [9'5"] |
| En-suite 3 / Bathroom | 3.4m [11'2"] x 1.8m [5'9"] |
| Bedroom 4 | 3.1m [10'2"] x 2.1m [6'9"] |

Iconic 9

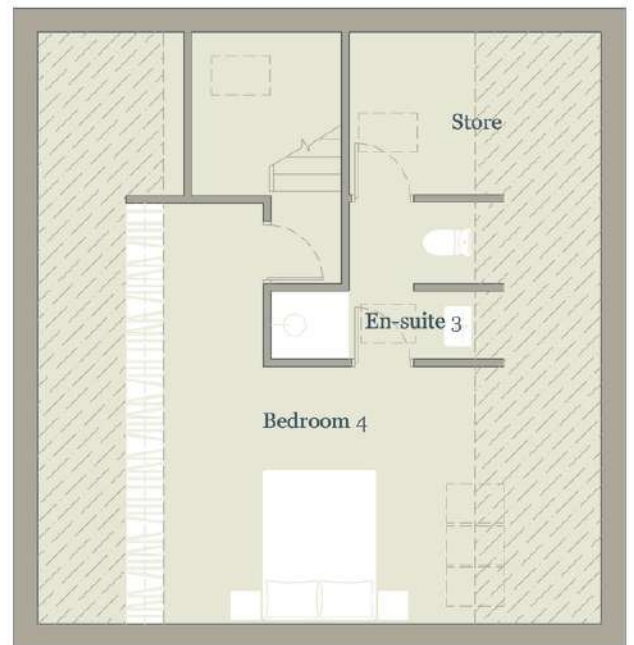


| | |
|--------------------------------|-----------------------------|
| Kitchen / Living / Dining Area | 4.8m [14'8"] x 7.9m [25'9"] |
| Utility | 2m [6'6"] x 2.7m [8'9"] |
| WC | 1.8m [5'9"] x 1.5m [4'9"] |
| Bedroom 1 | 3.9m [10'5"] x 5m [16'4"] |
| En-suite 1 | 3.9m [10'5"] x 1.1m [3'6"] |
| Dressing | 2.9m [9'5"] x 1.6m [5'2"] |

| | |
|------------|-----------------------------|
| Bedroom 2 | 2.9m [9'5"] x 4.5m [14'8"] |
| En-suite 2 | 1.8m [5'9"] x 3.4m [11'2"] |
| Bedroom 3 | 4.2m [13'8"] x 3.1m [10'2"] |
| En-suite 3 | 3m [9'8"] x 1.5m [4'9"] |

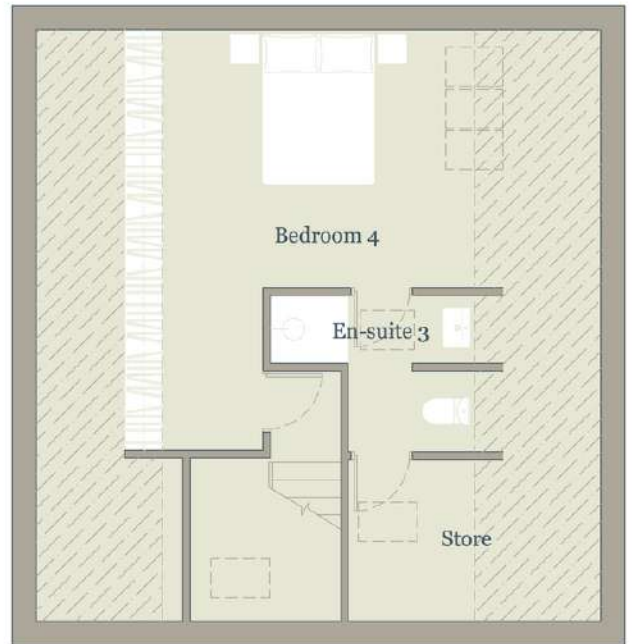
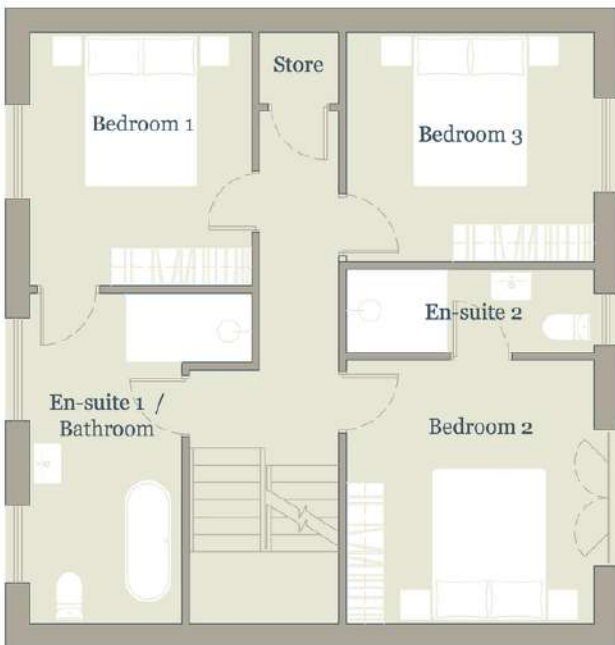
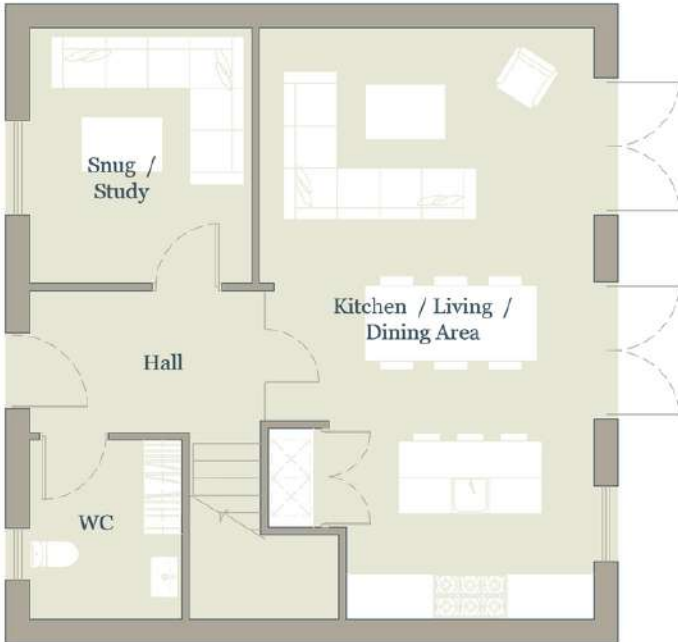


Floor Plans



| | |
|--------------------------------|-----------------------------|
| Kitchen / Living / Dining Area | 4.4m [14'4"] x 7.8m [25'6"] |
| Snug / Study | 2.9m [9'5"] x 3.4m [11'2"] |
| WC | 2m [6'6"] x 2.4m [7'9"] |
| Bedroom 1 | 2.9m [9'5"] x 3.4m [11'2"] |
| En-suite 1 / Bathroom | 2m [6'6"] x 4.4m [14'4"] |

| | |
|------------|-----------------------------|
| Bedroom 2 | 3.3m [10'8"] x 3.5m [11'5"] |
| En-suite 2 | 3.3m [10'8"] x 1.1m [3'6"] |
| Bedroom 3 | 3.3m [10'8"] x 3m [9'8"] |
| Bedroom 4 | 4.6m [15'1"] x 3.4m [11'2"] |
| En-suite 3 | 2.7m [8'9"] x 2.1m [6'9"] |



| | |
|--------------------------------|---------------------------|
| Kitchen / Living / Dining Area | 4.4m [14'4] x 7.8m [25'6] |
| Snug / Study | 2.9m [9'5] x 3.4m [11'2] |
| WC | 2m [6'6] x 2.4m [7'9] |
| Bedroom 1 | 2.9m [9'5] x 3.4m [11'2] |
| En-suite 1 / Bathroom | 2m [6'6] x 4.4m [14'4] |

| | |
|------------|---------------------------|
| Bedroom 2 | 3.3m [10'8] x 3.5m [11'5] |
| En-suite 2 | 3.3m [10'8] x 1.1m [3'6] |
| Bedroom 3 | 3.3m [10'8] x 3m [9'8] |
| Bedroom 4 | 4.6m [15'1] x 3.4m [11'2] |
| En-suite 3 | 2.7m [8'9] x 2.1m [6'9] |



OLD HALL

COUNTRY ESTATE

We specialise in exclusive luxury home developments whereby each property is bespoke, and the location chosen with care.

Luxury living is at the forefront of our design philosophy and our homes are finished to the highest standards to achieve this.

The result is a home that embodies the luxury lifestyle; bespoke design details with modern functionality to make your home life as enjoyable and as effortless as possible.



OLD HALL

COUNTRY ESTATE



CARDEN HOMES

DESIGNED LUXURY LIVING